



INSPEC

100% Independent
100% Australian Owned and Operated

Lubrication Insight for Maintenance Foresight

95 Clapham Road, Sefton NSW 2162
PH: (02) 9644 9100 FAX: (02) 9644 8565
17a Vulcan Road, Canningvale WA 6155
PH: (08) 9455 5274 FAX: (08) 9455 4069

Report Number:	999	899	714	673	
K Number Ref:					
Sample Number:	6	5	4	3	
Cust Sample ID/Job No:					
Schedule Class:	3DRV	3DRV	3DRV	3DRV	Caution values for DRIVE
Date Sampled:	31/05/1999	26/04/1999	10/03/1999	10/07/1998	
Date Received:	31/05/1999	27/04/1999	15/03/1999	22/07/1998	
Hrs On Oil:	1284	1037	764	512	
Hrs On Equipment:	8284	8037	7764	7512	
Status					

REPORT NUMBER	STATUS Take Action
999	
DATE COMPLETE	
1/06/1999	

EQUIPMENT DETAILS

SERIAL NO: H12345678B
ID: 1234
PARENT EQUIPMENT: EXCAVATOR
COMPARTMENT: FINAL DRIVE
MAKE: ACME
MODEL: BIG DIG

OPERATION DETAILS

OIL TYPE: ALPHA SP
OIL GRADE: ISO 460
TOP UP (L):
LUBE CAPACITY (L):
OIL CHANGED: N
BRANCH: SYDNEY
SITE: MINE SITE

CUSTOMER DETAILS

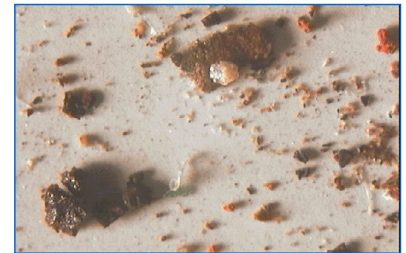
CUSTOMER CODE: 123456
NAME: SMART PTY LTD
ADDRESS: 95 CLAPHAM ROAD
SEFTON 2162 NSW
CONTACT: SERVICE MANAGER
PHONE: 61 2 9644 9100
FAX: 61 2 9644 5865

METALS (ASTM D5185) ppm	999	899	714	673	
ALUMINIUM ppm	97 C	16	12	18 A	11
ANTIMONY ppm	0	0	0	0	
BARIUM ppm	8	8	8	0	
BORON ppm	0	0	0	0	
CADMIUM ppm	2	0	0	0	
CHROMIUM ppm	0	0	1	0	21
CALCIUM ppm	18	8	27	30	ADDITIVE
COPPER ppm	6	4	0	8	51
IRON ppm	1262 C	359 A	335 B	59	150
LEAD ppm	0	0	1	0	51
MOLYBDENUM ppm	18	15	15	3	ADDITIVE
NICKEL ppm	8	2	17	7	
PHOSPHORUS ppm	1036	1051	0.101	599	
SILICON ppm	301 D	35 A	30 A	29	30
SILVER ppm		0	0	0	
SODIUM ppm	16	18	11	0	51
TIN ppm	0	0	0	0	51
TITANIUM ppm	0	0	0	0	
ZINC ppm	11	4	30	5	
VANADIUM	0	0	0	0	
FTIR SCAN (JOAP)					
OXIDATION (OL1100)	11.4	14.8	10.0	11.6	
NITRATION (OL1100)	5.5	6.7	5.0	5.6	
WATER (OL1100) ppm	0.627	0.024	0.077	0.072	0.100
PARTICLE QUALITY INDEX (OL1028)	188	92	77	22	200
VISCOSITY @ 40°C (ASTM D445) cSt	449.49	443.51	440.45	331.47 X	
RETAINED SOLIDS @ 8.0µm w/w (OL1003) %w/w	1430	493	220	29	300

Abnormal values

X = Uncategorised abnormal value
A = Slightly elevated abnormal value
B = Elevated abnormal value
C = High abnormal value
D = Critical abnormal value

Filtergram at 60 times actual size

**RESULTS OF SAMPLE ANALYSIS****Comments: 999**

- * Iron content is high and could indicate gear/bearing wear.
- * Retained solids is critical and consistent with dirt/wear debris. Check seals.
- * Silicon/aluminium content is critical and may reflect dirt entry. Check seals.
- * Water content is critical. Check for source of moisture ingress. Check seals.
- * Silicon increase at >500% is critical.
- * Aluminium increase at 389% is critical.
- * Iron increase at 184% is elevated.
- * Other results are satisfactory.
- * Recommend oil be drained and new oil be sampled at half recommended intervals to monitor condition

Comments: 899

- * Iron is slightly elevated and may indicate gear tooth/bearing wear.
- * Retained solids is elevated and consistent with dirt/wear debris. Check seals.
- * Silicon is slightly elevated and may indicate dirt or gasket sealant.
- * Other results are satisfactory.
- * Recommend current oil be resampled at half recommended intervals to monitor and assess condition.

Comments: 714

- * Iron content is elevated and could indicate gear tooth/bearing wear.
- * Silicon is slightly elevated and may indicate dirt or gasket sealant.
- * Iron increase at 280% is high.
- * Other results are satisfactory.
- * Recommend current oil be resampled at half recommended intervals to monitor and assess condition.

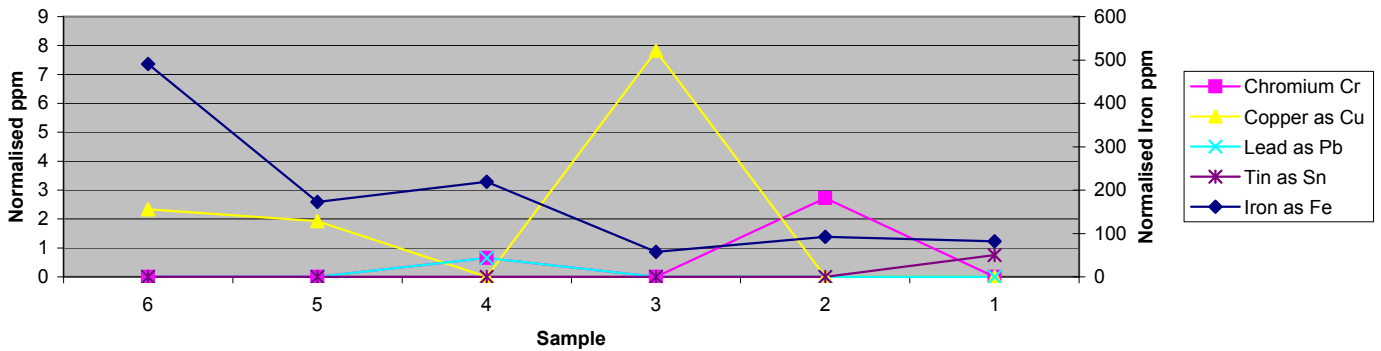
Authorised signatory

Adam Morrison
adam.m@oilcheck.com.auTelephone 61 2 9644 9100
Sample tested as receivedAnalysis by OILCHECK PTY LTD NSW
ABN 56001554310
An independent owned and operated specialist
commercial laboratory

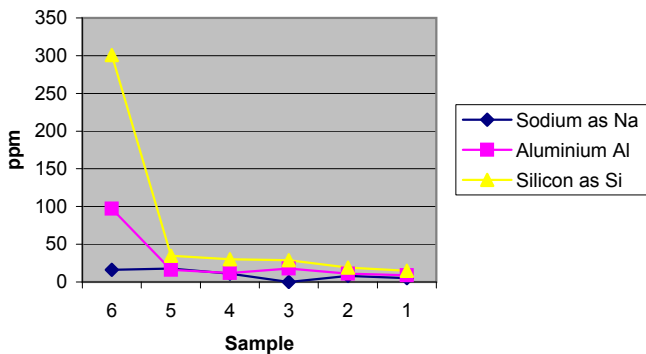


Lubrication Insight for
Maintenance Foresight

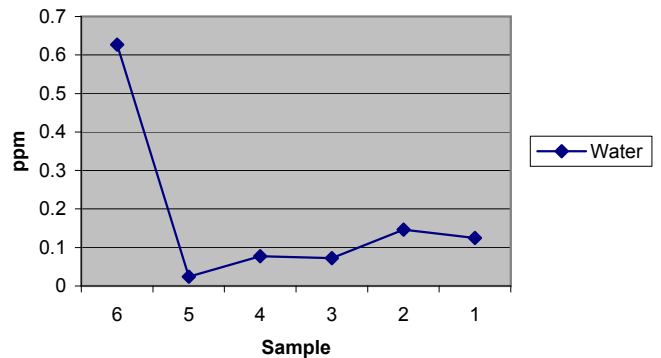
Wear metals



Contamination elements



Water



QUALITY POLICY STATEMENT

Oilcheck Pty Ltd is a commercial laboratory, accredited with the National Association of Testing Authorities. We specialise in the physical and chemical testing of lubricants, fuels and other petrochemical products, primarily for the purpose of condition monitoring and fault diagnosis. The service is utilised for plant and equipment from a wide range of industries.

We are wholly Australian owned and market our products and services throughout Australia and export to a number of overseas countries.

We recognise the fact that the key to success in any organisation is the consistent satisfaction of customer requirements. Our company is committed to continually improving our quality system so as to provide products and services which meet or exceed our customers' expectations and which will conform to all regulatory requirements.

As part of this pursuit for quality, implementation and adherence to quality standards throughout the company is vital. We pay due regard to the health and safety of our staff and encourage proper respect for the environment.

The quality system conforms to the Internationally recognised quality standard AS/NZS ISO 9001:2000, "Quality management systems - Requirements". Oilcheck is also committed to comply with the requirements of ISO 17025, "General Requirements for the Competence of Testing and Calibration laboratories".

Support of our quality system by trained staff will allow for continuous improvement of our organisation and the relationship with our customers. This will ensure our position as a leader in the increasingly competitive national and international markets.

Did you know: The information that you would normally find on the back of the report has moved. We've made it easier to read and understand on the web along with other interesting information. For more information visit us on the web at www.oilcheck.com.au/questions

Did you know: Graphed metal results are normalised, this means we are only comparing results at standard intervals i.e. 200 hours for engines, 500 hours for non-engines. This is only for trending purposes so you can compare the current results with past results. For more information visit us on the web at www.oilcheck.com.au/questions

Did you know: It is important to fill out the sample description forms correctly. The information that you provide us with will help us to know more about your sample, and help us help you for when you get the report back. For more information visit us on the web at www.oilcheck.com.au/questions

Did you know: If you take the sample when the oil is cold it will reduce the accuracy of the sample. The majority of the particles we are looking for fall to the bottom and may not be tested. So make sure the samples are taken at operating temperatures to get the maximum benefit out of your PROBE oil analysis

www.oilcheck.com.au/questions